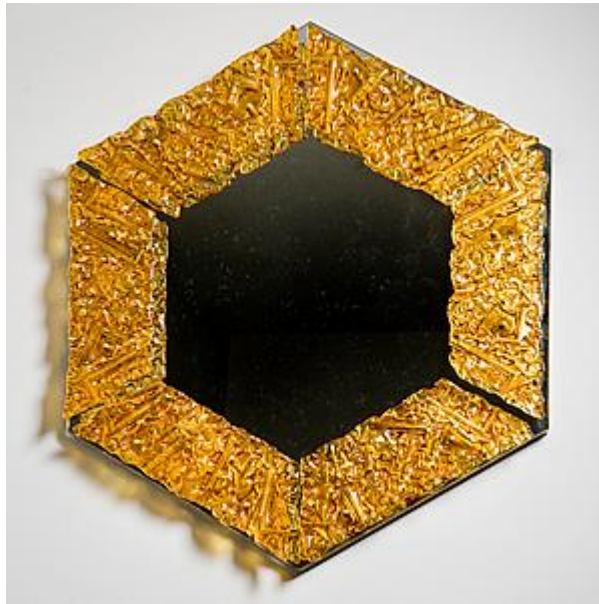


V e s s e l



Brett Manley (1957 -)

Amber Mirror

Circa: 2014

2014

United Kingdom

Glass and antique mirror

94 x 0 cm (37 x 0 inches)

Each of Brett Manley's artworks are created as a result of trying to understand her chosen medium with greater understanding. The aim is to answer questions and elucidate the various curiosities about glass.

Can be commissioned to bespoke colours and dimensions.

Literature:

Unique

Artist description:

Each of Brett Manley's artworks are created as a result of trying to comprehend her chosen medium with greater understanding. The aim is to answer questions and elucidate the various curiosities about glass.

Through experimenting with the various quirks that kiln formed glass can unexpectedly create, Manley exploits the magical optical nature of glass to transform the two dimensional into three dimensions. By layering glass, Manley is fascinated by the spaces created, held between the transparent surfaces.

Exploiting too, the light transmitting qualities that is intrinsic to glass: its ability to obscure, reflect, project, reveal and alter, creating optical illusion type kinetic effects.

In her own words: "Playing with glass is playing with light and colour...My inspiration is often material led, but also comes from nature, gut emotion and a need to create. As Dannie Abse said, "Art is a game only if you play at it, a mirror that reflects from the inside out."