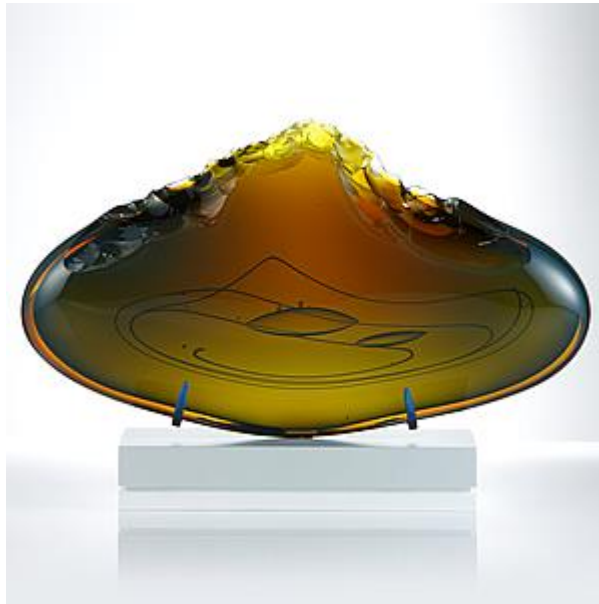


V e s s e l



James Devereux (1982 -)

Clovis in Tobacco

Circa: 2015

2015

United Kingdom

Glass wood and steel

25 x 37 x 12 cm (9⁷/₁₆ x 14⁵/₁₆ inches)

Single Clovis with lacquered wood and steel base.

Monolithic in presence, the Clovis Collection is the result of laboured experiments by the artist to be able to literally chip the glass like stone. A blow too hard would simply shatter the piece, too light a tap would crush the surface. After perfecting this unusual technique, the results are breathtaking, smooth lines are juxtaposed with the haphazard. After flame polishing, these meandering edges are not sharp despite their appearance, but smooth to the touch.

Literature:

Unique

Artist description:

Starting in the industry at the tender age of 15 thanks to a work experience placement at Bath Aqua Glass, Devereux showed a natural talent for the craft and has been working as a glass artist ever since.

Specialising in working with hot glass, he is adept at working with solid forms as well as blown pieces. Working with extensive knowledge of glass techniques Devereux will happily undertake new challenges. He has previously worked with artists and other glassmakers including Simon Moore, Louis Thompson, Liam Reeves and KT Yun.

In September 2008 The James Devereux Glass Studio was opened, its setting, the inspiring Wiltshire countryside. A creative space that has grown since day one, it is now a fully functional Hotshop, designed to produce both large and small works. The studio also has a separate coldshop where work can be finished to the highest standard.

A high skill level, technique and a good eye help make Devereux one of the up and coming glass

craftsmen in the glass world today.