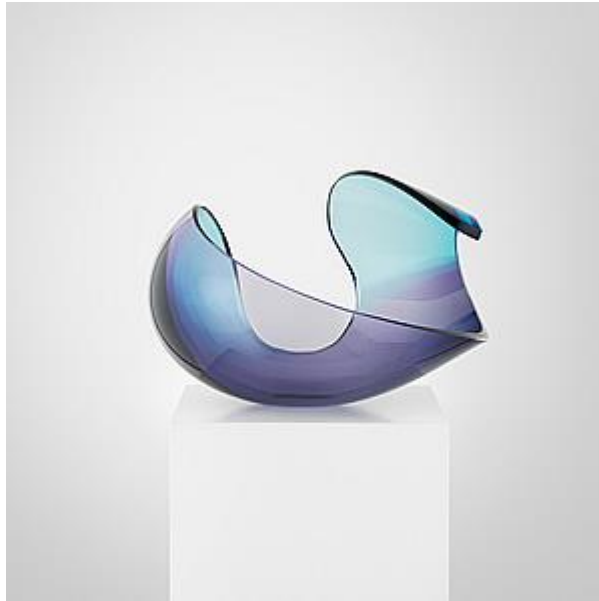


# VESSEL GALLERY

LONDON



**Lena Bergström (1961 - )**

**Stellar II**

Circa: 2016

2016

Sweden

Glass

31 x 46 x 31 cm (12<sup>1</sup>/<sub>4</sub> x 18<sup>1</sup>/<sub>4</sub> inches)

Focus & elegance; dramatic sharp graphic shapes; fluid & sensuous curves - just some of the words that spring to mind when looking at the work of Lena Bergström. Vessel is proud to represent the work of this Swedish star, whose designs are as sharp & humorous as her character, for Kosta Boda, Sweden's most famous crystal company.

**Literature:**

Unique

**Artist description:**

Focus & elegance; dramatic sharp graphic shapes; fluid & sensuous curves - just some of the words that spring to mind when looking at the work of Lena Bergström.

Born in 1961 in the far northern town of Umeå, Lena followed a diverse training from window dressing to studying textiles at Stockholm's prestigious Konstfack school and actually achieved her initial burst of fame for outstanding textile art, which is precisely why Orrefors Studio (Sweden's then most famous crystal company) head hunted her. The renowned glass company perfected its quest for gathering artists from different fields into a sensational science through out it's 100 year old history. "Perhaps because I haven't worked with glass half my life I dare to make the shapes I have done".

Through her time at Orrefors and now working with Kosta Boda, Lena has certainly pushed the boundaries of what can be done with glass, developing her own distinct language, and earning a staggering 12 'Excellent Swedish Design' awards in the process. Lena expresses herself in many

colours combined with the crispest of clear glass but always with a tailor's eye for balance, composition and detail. Thick & thin, mat & glossy are harmoniously brought together. "I am building up a library of colours and forms with personal symbolic value. My design idiom is emotional and physical. The greatest beauty must balance on the brink of failure."

From her famous Squeeze range, when an over-talkative glass blower allowed a vase to stay in the furnace just a second too long - with stunning results - to the iconic Slitz forms which reinvent the flower vase, one theme runs through out - Lena's vision of a new basic elegance with no extraneous details.

Lena has designed several prize-winning products and received numerous awards. She has works in the permanent collections of the;

Nationalmuseum in Stockholm | The Rohsska Museum of Fashion, Design & Decorative Arts in Gothenburg | Cleveland Museum of Art in the United States | Nasjonalmuseet, Oslo, Norway | The Victoria & Albert Museum in London