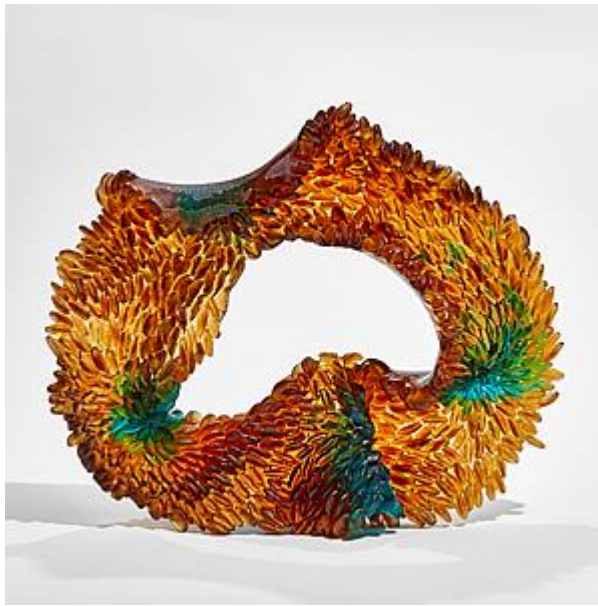


VESSEL GALLERY

LONDON



Nina Casson McGarva (United Kingdom 1990 -)

Kelp

'Kelp' is a unique glass sculpture by the British artist, Nina Casson McGarva.

Casson McGarva's glass sculptures simply astound. Whilst momentarily malleable, immense planes of hot cast glass are coaxed into life. Imbued with the intensity of their creation, each unique artwork is filled with drama and breathtaking poise.

In her own words;

“The starting point in my work is nature. I take a detail of an element I find in nature and use it as an inspirational base to create my own abstraction, that then builds into a complex sculpture. My inspiration comes from cycles of nature that I associate with glass because to me the material goes through a cycle and is at it's most alive when it's hot and being transformed. The end result is solid and doesn't move any longer, it is at the fragile time before disintegration and maintains a dynamic form and rich structures such as dry leaves, feathers or sea shells. In the making process I shape it hot in an open kiln until the glass stops moving. When the glass transforms to be a solid, the piece is finished”

Born in Gloucester in England, Nina Casson McGarva grew up in rural central France in the middle of the Burgundy countryside. Surrounded by a family of creatives & makers and growing up in an environment full of nature and craft, has definitely influenced her life and artwork.

The artist can also create pieces to commission, please contact the gallery for further information.

Artist description:

Born in Gloucester in England, Nina Casson McGarva grew up in rural central France in the middle of the Burgundy countryside. Surrounded by a family of creatives & makers and growing up in an environment full of nature and craft, definitely influenced her life and artwork.

In her own words about her work;

“The starting point in my work is nature. I take a detail of an element I find in nature and use it as an inspirational base to create my own abstraction, that then builds into a complex sculpture. My inspiration comes from cycles of nature that I associate with glass because to me the material goes through a cycle and is at it's most alive when it's hot and being transformed. The end result is solid and doesn't move any longer, it is at the fragile time before disintegration and maintains a dynamic form and rich structures such as dry leaves, feathers or sea shells. In the making process I shape it hot in an open kiln until the glass stops moving. When the glass transforms to be a solid, the piece is finished”

McGarva trained, learning the basic technical skills of glass blowing, at the Ecole Nationale du Verre Jean Monnet (a technical college for workers in crystal glass factories) and at the Glass and Ceramics Workshop on Bornholm (part of the Royal Danish Academy of Fine Arts) where she started to use other glass techniques such as casting, fusing and experimenting with several new processes. Since graduating in 2014, McGarva has been on three notable Artist residency programs;

Shin-nagata glass residence Kobe, Japan (2019) | Eair Program at Pilchuck Glass school in Stanwood, WA, USA (2015) | Starworks in Star, NC, USA (2014)

Casson McGarva has shown her work throughout Europe and in the USA. Most recently, she was selected as one of 60 artworks for the Toyama International 2024 Glass Exhibition.