

Vessel Gallery
CONTEMPORARY ART GLASS & LIGHTING



Phillippa Martin
Lighting & Artworks



Phillippa Martin
Lighting & Artworks

Japanese Flowers
Tall vase 31cm high
Round vase 20.5cm high



Although born in the UK it was a visit to Murano in the early nineties that ignited Martin's fascination for glass. On moving to France and studying at the School of the Cerfav, Martin was rewarded with two diplomas: CAP glassblower and Journey(wo)man's Certificate. Her work at this time followed the strict rules of filigrana techniques.

With a continued passion for Venetian glass, Martin then went on to study under Tobias Mohl, the Danish virtuoso glassmaker. Mohl himself a former student of Lino Tagliapietra, the undisputed master of this style of blown glass. After relocating to Elbeltoft in Denmark with its numerous studios and acclaimed Museum, her collaboration with Tobias Mohl continued resulting in several major exhibitions, in particular the William Traver Galerie in Seattle and the prestigious "Compétition Reticello" won by Mohl.

On returning to England and working with the master glass maker Neil Wilkin, Martin's perceptions of what is achievable with glass were greatly challenged. Wilkin's work was large, solid and sculptural, often monumental in scale for both indoor and outdoor installations. Where her work had previously employed delicate filigree techniques, Martin was struck by the sheer mass and pure form of Wilkin's glass, as if it was inhabited by its own light. Martin was hugely influenced during this time and asserted a new style and direction for her own making. Having already mastered her control of the traditional skills of glass blowing, Martin forged her own contemporary style to her work by merging the sensitive alongside the solid. The ability to create large scale works that incorporate finer details.

After winning the international competition of the Red House Glass Cone, Martin went on to develop larger scale installations and creations with the artist Gwendoline Bonnet with whom she set up her current company Verre l'Essentiel. Martin and Bonnet continue to collaborate together and also produce their own collections.

In her own words;

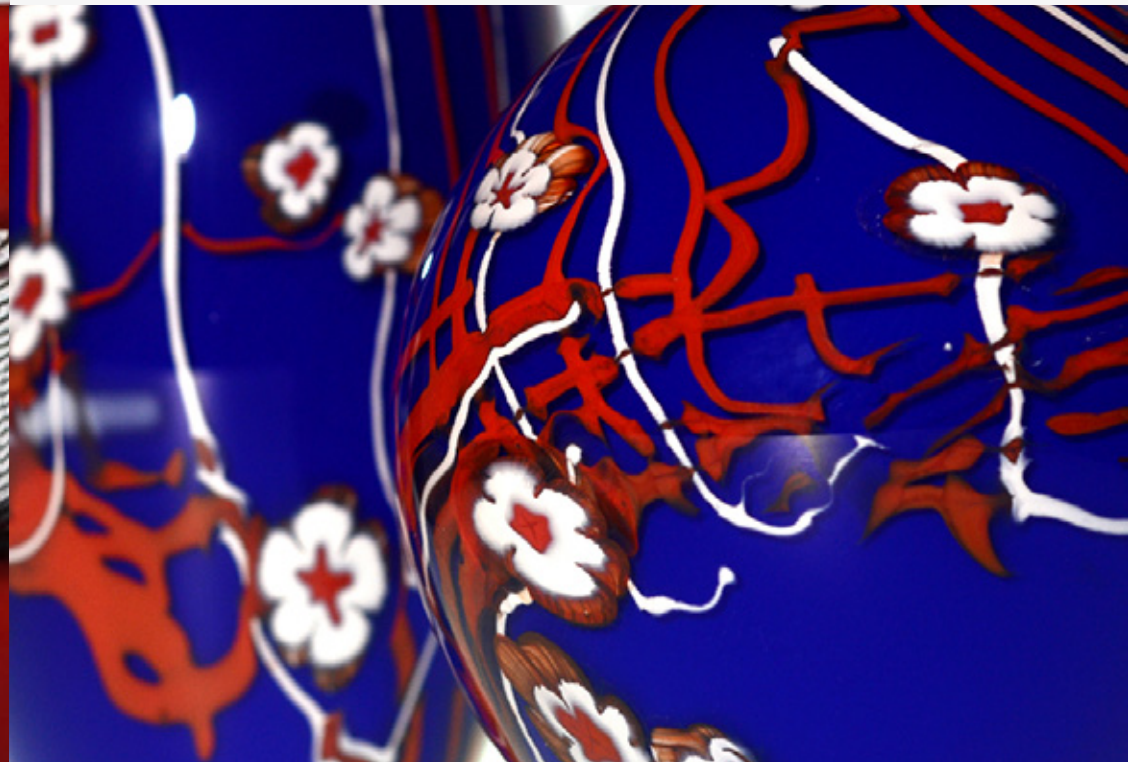
"Through my artistic work I hope to make sensitive the link between the earth, the heart and the heavens. This link is at the same time material construction and spiritual openness. My works create a sensation of physical elevation and contemplative openness. I express my faith and my love of glass making through my glass chandeliers and unique blown pieces."

VESSEL GALLERY 114 KENSINGTON PARK ROAD LONDON W11 2PW
+44 (0)207 727 8001 • info@vesselgallery.com • www.vesselgallery.com

This page
Trinity plate in white
Plate on stand 64cm high
Plate 50cm diameter

Opposite page
As above in red





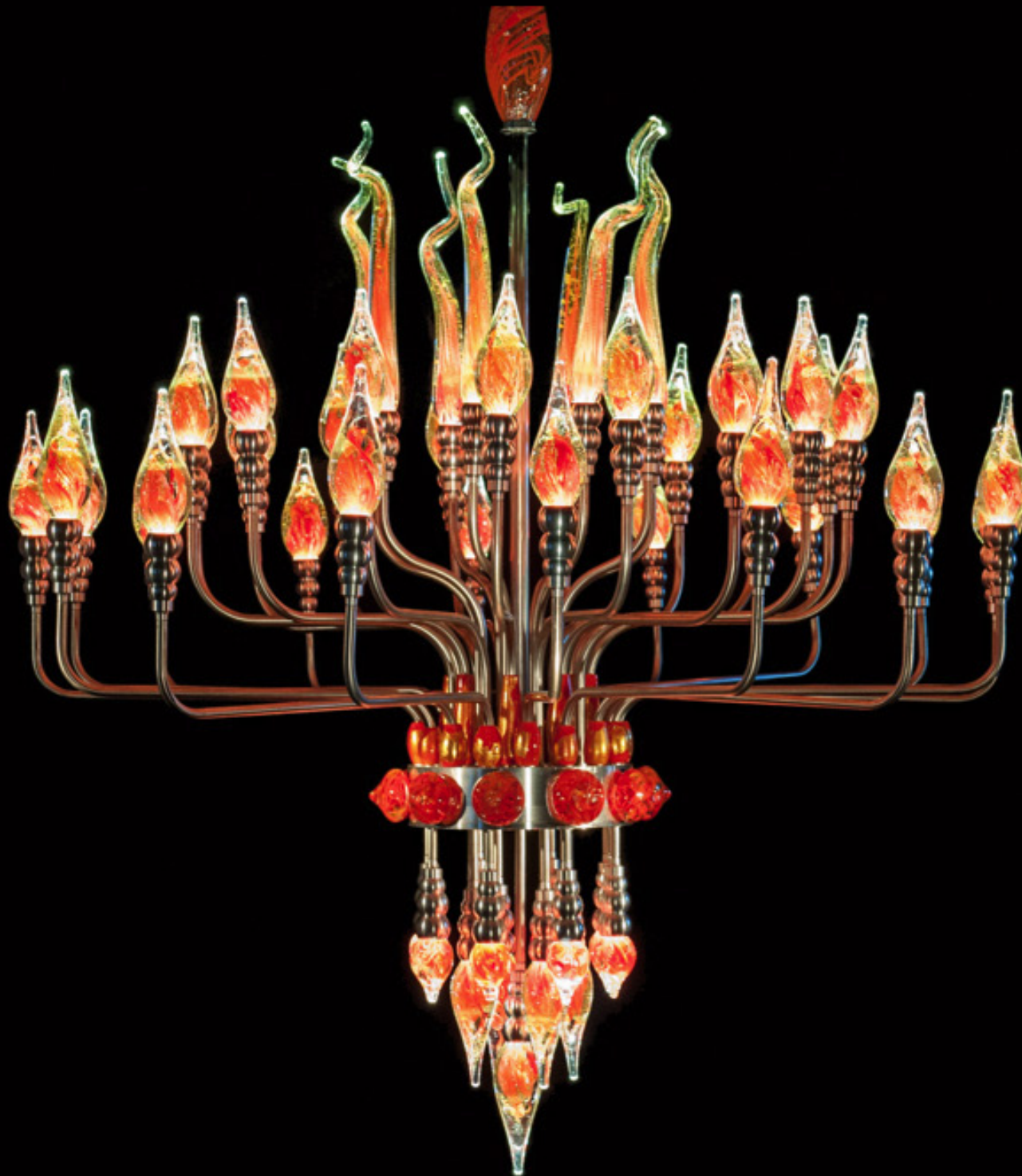
This page
Japanese Flowers in blue

Opposite page
Rise vases



Trinity bowl in white
30cm diameter
17cm high





Lustre Flamboyant Chandelier
150cm diameter
150cm height

Next page
Detail of the above





This page
Lustre Contemporain I Chandelier

Left
Detail of the above



Left
Lustre Contemporain II Chandelier

This page
Detail of the above



Vessel Gallery

CONTEMPORARY ART GLASS & LIGHTING

VESSEL GALLERY 114 KENSINGTON PARK ROAD LONDON W11 2PW
+44 (0)207 727 8001 • info@vesselgallery.com • www.vesselgallery.com

Catalogue design by Juliet Mayo