



VESSEL GALLERY

SUPERNOVA

A solo exhibition
by Lena Bergström



SUPERNOVA

8 May - 5 June 2025

A solo exhibition
by Lena Bergström

Vessel Gallery presents *Supernova*, a solo exhibition by the renowned Swedish designer & artist, Lena Bergström.

As if brought to life with an element of alchemy, each *Supernova* appear to be a frozen moment of explosive energy, where curved planes of coloured light are scorched with glittering facets. Unique, with timeless beauty and elegance, these will forever retain their brilliance.

It is thought that gold - and other precious metals - to have been produced during supernova nucleosynthesis; a supernova being the powerful and luminous explosion of an immense star. To comprehend such science and its secrets seems unfathomable and beyond the realm of reason, however, on viewing each of these nine glistening *Supernova*, it is as if these illusive mysteries have become a little easier to grasp.

With its inception in 2001, *Supernova* are the latest additions to Bergström's illustrious ongoing collection, *Planets*, which are made in collaboration with the skilled glassblowers & master cutters of Kosta Boda. Over the last 24 years, with numerous returns to this concept, it would appear that Bergström has an imagination as endless as the universe, with each surpassing what has gone before.

Lena Bergström has designed several prize-winning products and received numerous awards including 12 'Excellent Swedish Design' awards. She has works in the permanent collections of the: Nationalmuseum, Stockholm, Sweden | The Rohsska Museum of Fashion, Design & Decorative Arts, Gothenburg, Sweden | Cleveland Museum of Art, USA | Nasjonalmuseet, Oslo, Norway | The Victoria & Albert Museum, London, UK.

Supernova I



Supernova I

2025 | Unique
H 31 cm W 45 cm D 33 cm
Handblown & cut glass with silver lustre



Supernova V



Supernova V

2025 | Unique
H 32 cm W 37 cm D 30 cm
Handblown & cut glass with 23 carat gold



Supernova VI



Supernova VI

2025 | Unique
H 30 cm W 43 cm D 30 cm
Handblown & cut glass with 23 carat gold



Supernova III

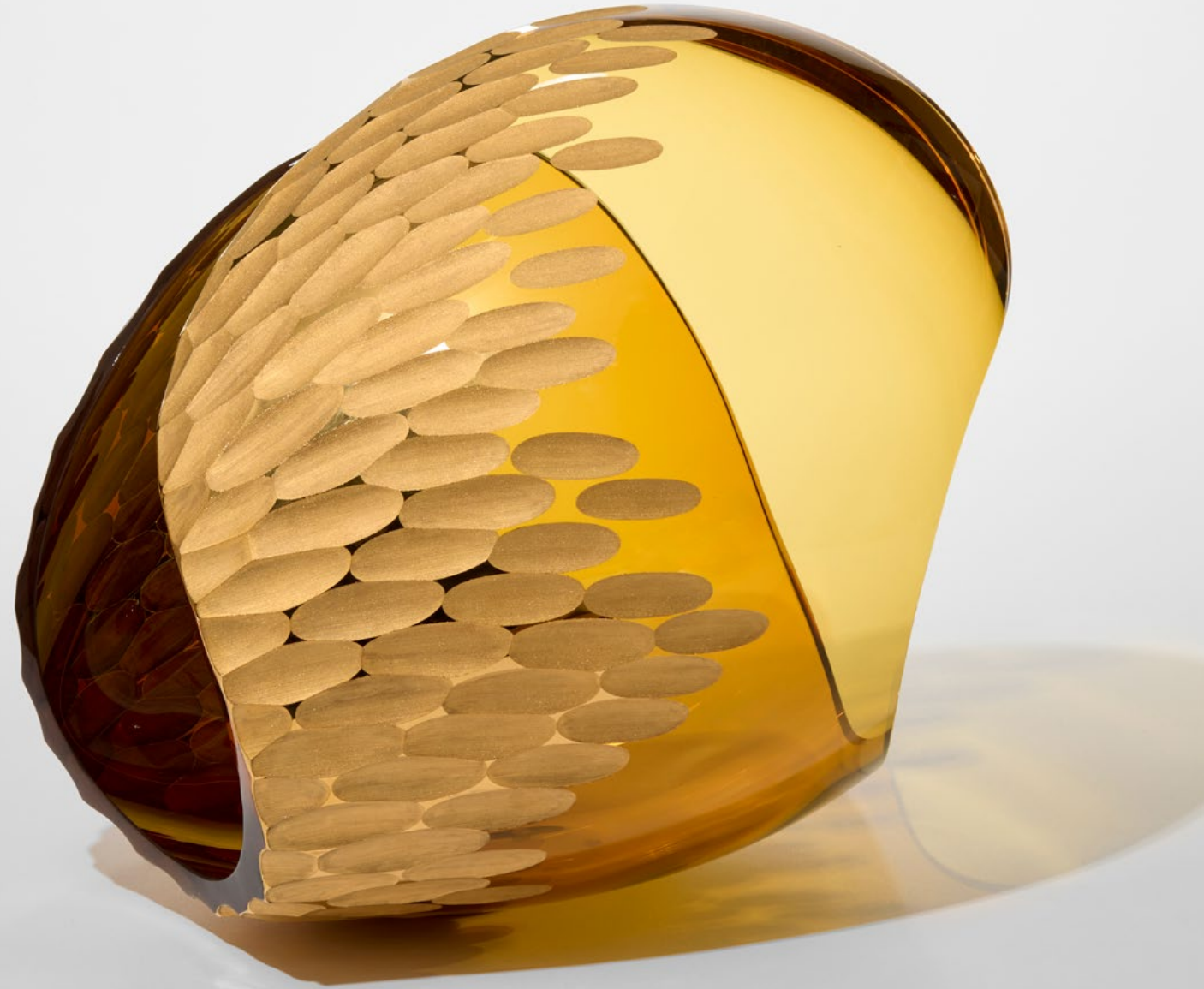


Supernova III

2025 | Unique
H 32.5 cm W 38 cm D 32 cm
Handblown & cut glass with silver lustre

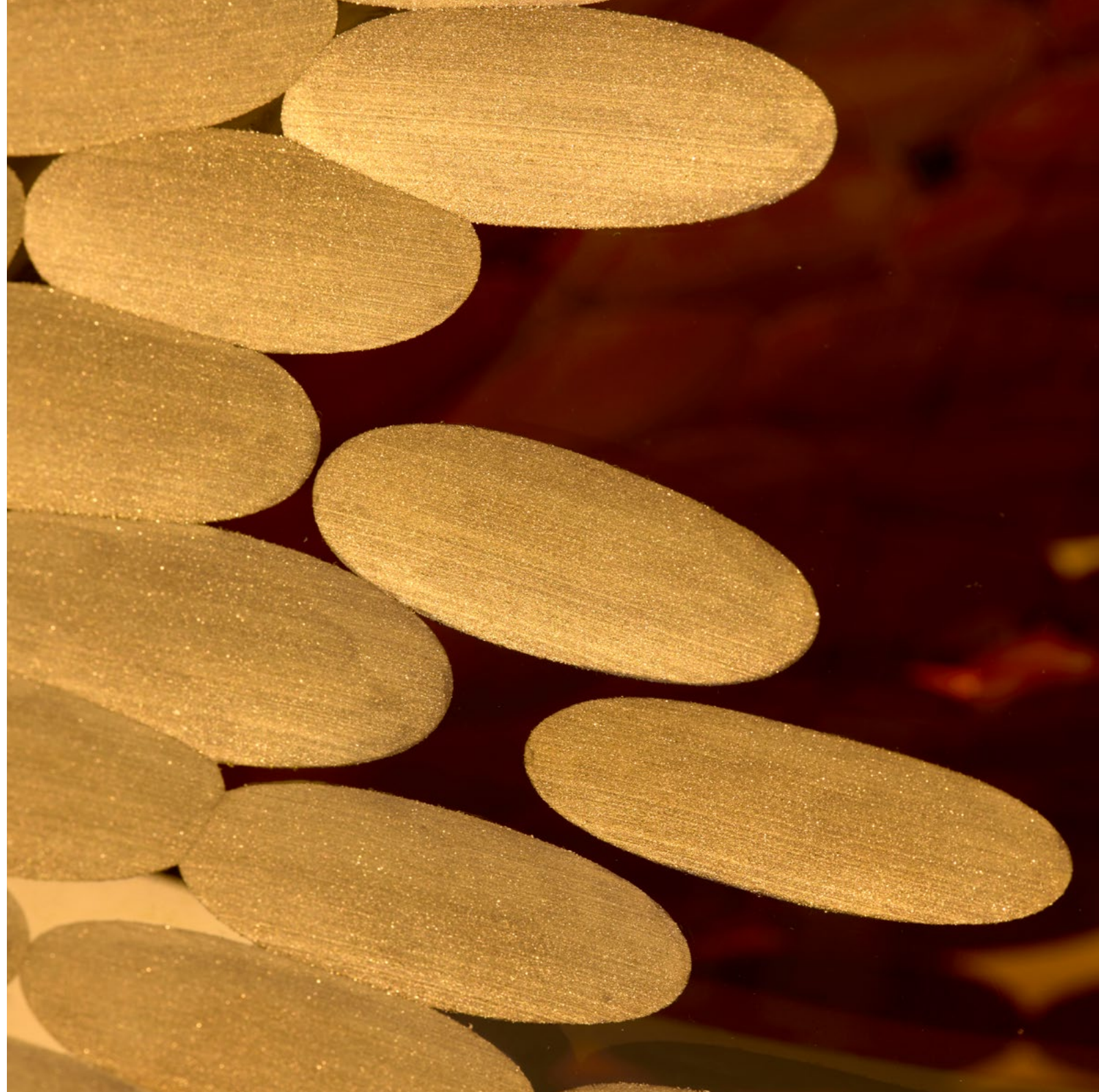


Supernova VII



Supernova VII

2025 | Unique
H 32.5 cm W 36 cm D 31 cm
Handblown & cut glass with 23 carat gold



Supernova IX



Supernova IX

2025 | Unique
H 34.5 cm W 45 cm D 34 cm
Handblown & cut glass with 23 carat gold



Supernova II

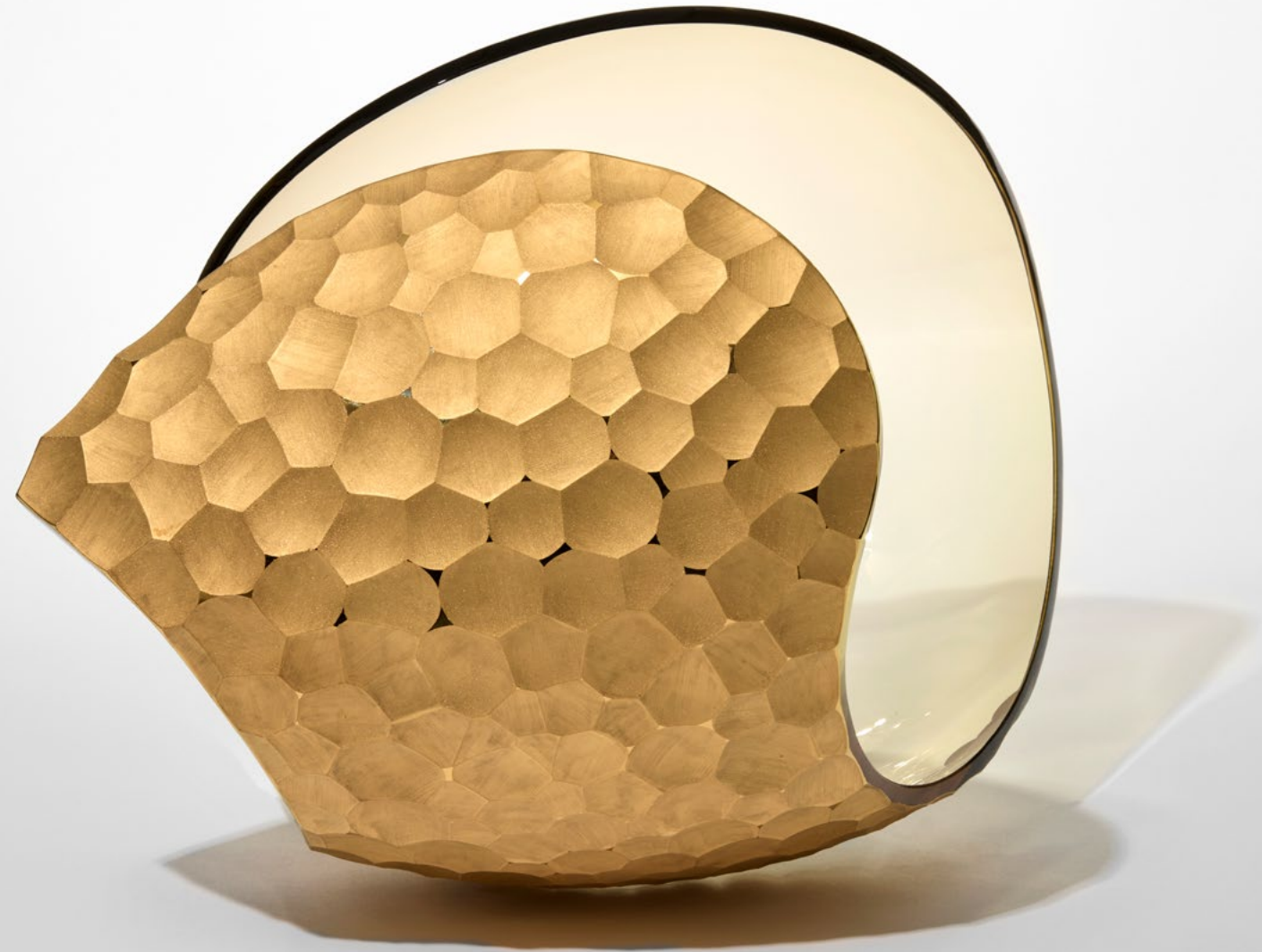


Supernova II

2025 | Unique
H 32 cm W 40 cm D 31 cm
Handblown & cut glass with silver lustre

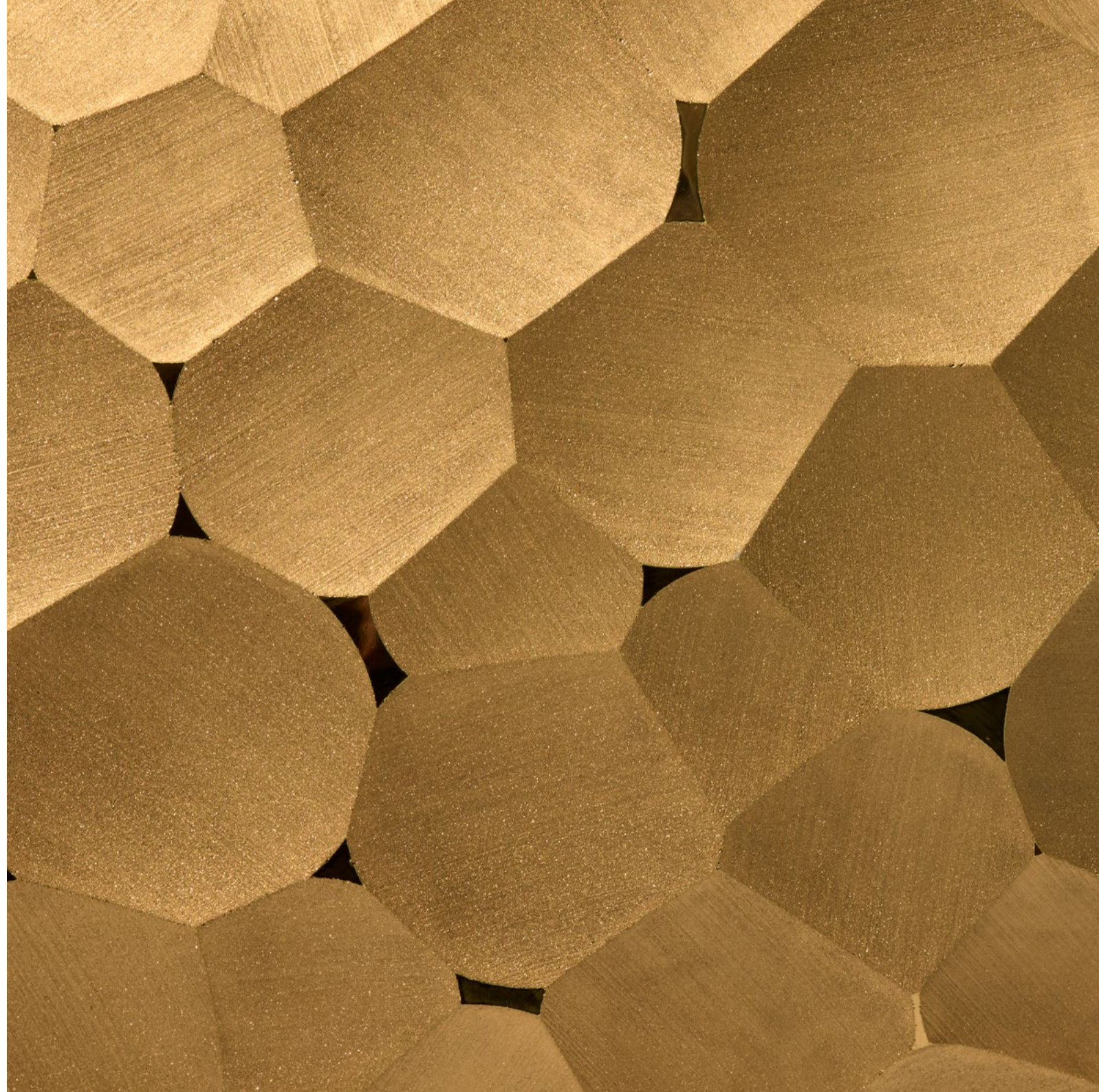


Supernova IV

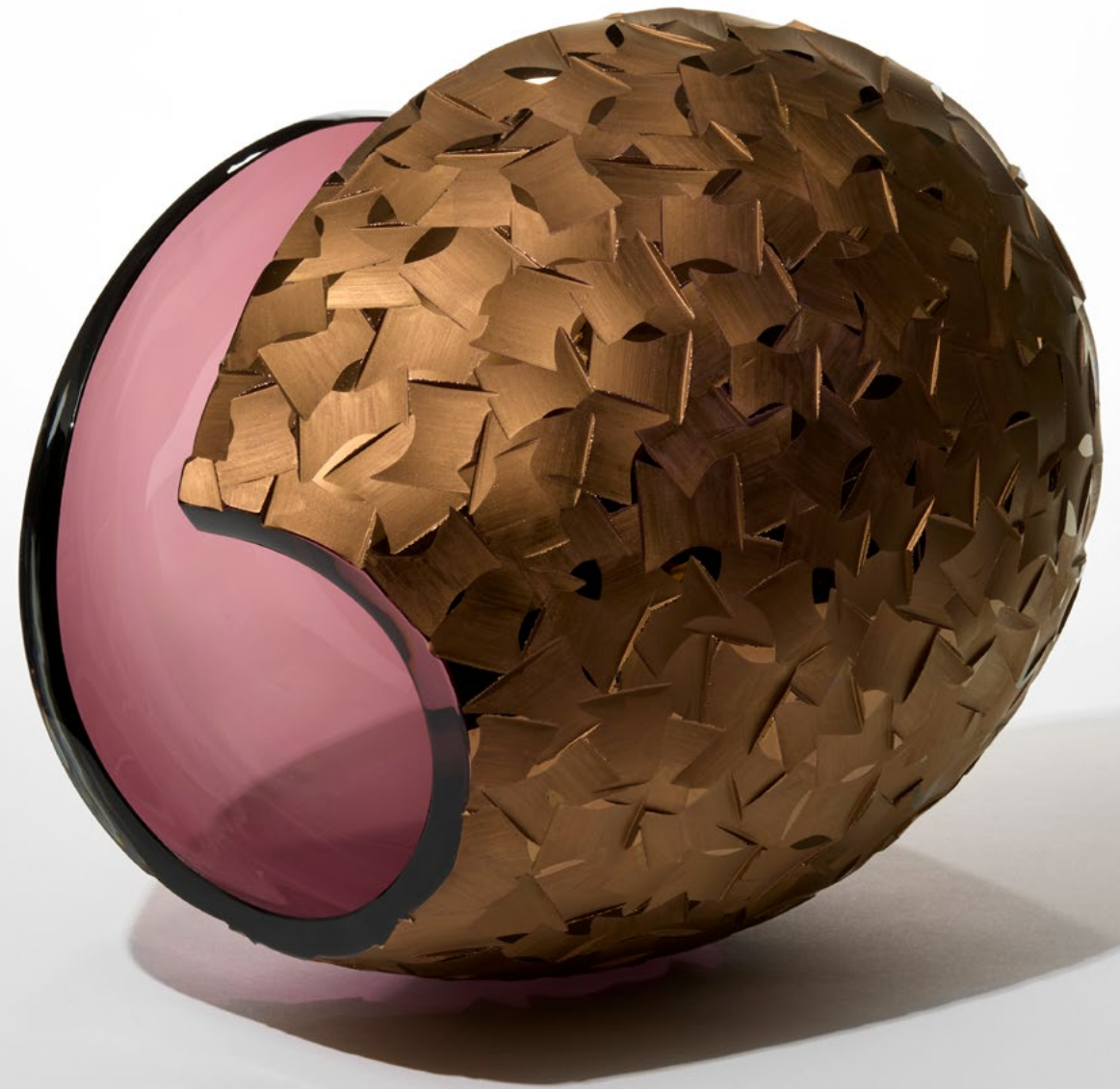


Supernova IV

2025 | Unique
H 33 cm W 44 cm D 31 cm
Handblown & cut glass with 23 carat gold




Supernova VIII



Supernova VIII

2025 | Unique
H 33 cm W 38 cm D 28 cm
Handblown & cut glass with 23 carat gold





Vessel Gallery
114 Kensington Park Road
Notting Hill
London W11 2PW

+44 (0) 207 727 8001
info@vesselgallery.com
@vessellondon

Photography
Artworks by Agata Pec
Lena Bergström & team in Verkstad 12 at Kosta Boda by Roland Feith

Catalogue design
Juliet Mayo